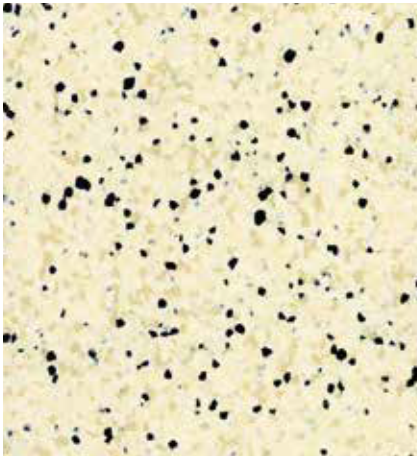


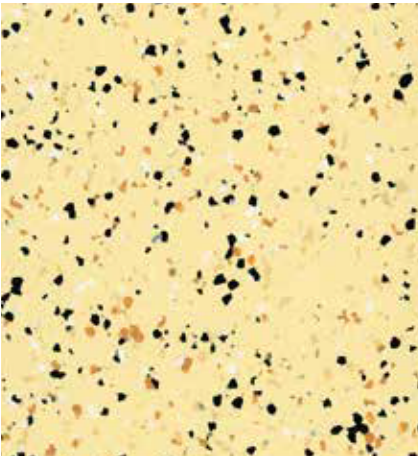
CONDUCTIVE & ESD VINYL TILE

# PASTELL®

ESD 1101/CONDUCTIVE 2101



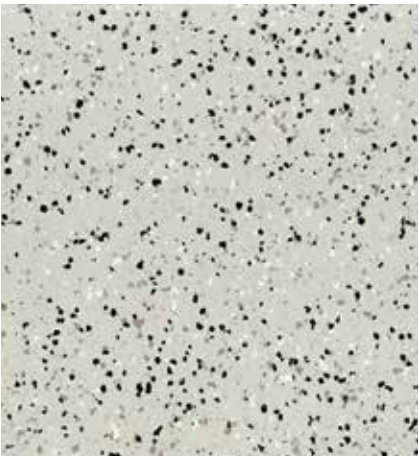
1101-304  
2101-304 Winkie



1101-310  
2101-310 Light Yellow



1101-091  
2101-091 Ceilometer



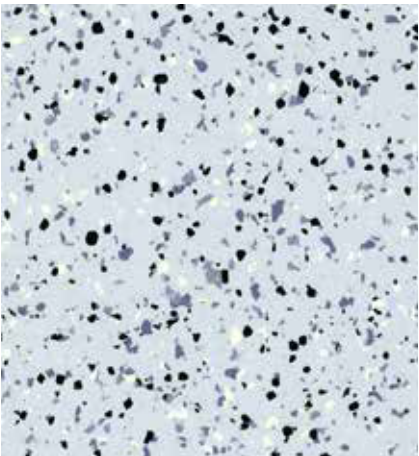
1101-001  
2101-001 Light Grey



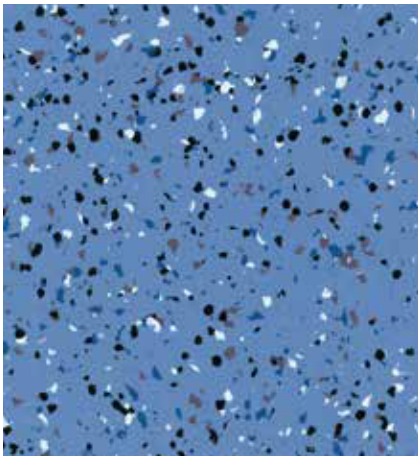
1101-008  
2101-008 Forest Grey



1101-512  
2101-512 Soft Green



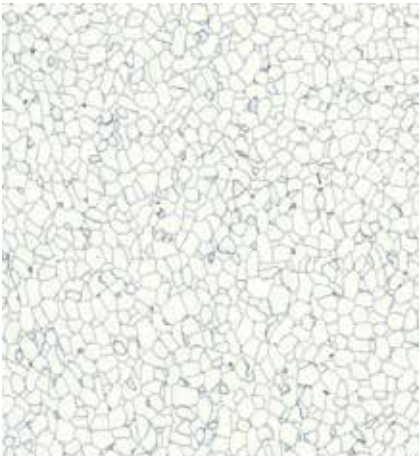
1101-614  
2101-614 Porcelain



1101-620  
2101-620 Sapphire



ESD 1013/CONDUCTIVE 2013



1013-801  
2013-801 Porcelain



1013-003  
2013-003 Grey Pumice



1013-601  
2013-601 Blue Porcelain



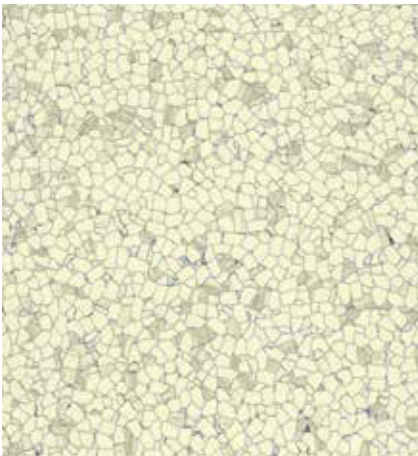
1013-001  
2013-001 Grey Porcelain



1013-501  
2013-501 Crystal Green



1013-203  
2013-203 Yellow Crystal



1013-201  
2013-201 Cloudy



1013-502  
2013-502 Agate Jasper

## Technical Data

Structure	Standard	Unit	Pastell Conductive	Pastell ESD
Type of flooring	EN 649 / EN ISO 10581		Conductive vinyl tile	ESD vinyl tile
Overall thickness	EN 428 / EN ISO 24346	mm	2	2
Tile width / length	EN 426 / EN ISO 24341	mm	2101 : 1000 x 1000	1101 : 1000 x 1000
			2013 : 600 x 600	1013 : 600 x 600
Total weight	EN 430 / EN ISO 23997	g/m <sup>2</sup>	2101 : 2950 g/m <sup>2</sup>	1101 : 2950 g/m <sup>2</sup>
			2013 : 4100 g/m <sup>2</sup>	1013 : 4100 g/m <sup>2</sup>

## Safety criteria

Flammability	EN 13501-1	class	Bfl - s1	Bfl - s1
Slip resistance	DIN 51130	group	R9	R9
REACH Regulation No. 1907/2006	REACH 181		contains no substances mentioned in the SVHC-list	contains no substances mentioned in the SVHC-list

## Performance

Impact sound reduction	EN ISO 10140	dB	3	3
Residual indentation	EN 433 / EN ISO 24343	mm	0.05	0.05
Wear resistance	EN 649	group	P	P
Color fastness	ISO 105-B02	rating	≥6	≥6
Electrical resistance	EN 1081	Ω	< 1.0x10 <sup>6</sup>	1.0x10 <sup>6</sup> - 1.0x10 <sup>9</sup>
Static electrical propensity	EN 1815	kV	≤2.0	≤2.0
Thermal resistance	EN 12667	m <sup>2</sup> K/W	0.04	0.04
Resistance to staining	EN 423 / EN ISO 26987		good resistance	good resistance
Castor chair	EN 425	Type W	Suitable	Suitable

## Classification

Domestic	IOS 10874-EN 685	class	23 heavy duty	23 heavy duty
Commercial	IOS 10874-EN 685	class	34 very heavy duty	34 very heavy duty
Industrial	IOS 10874-EN 685	class	43 heavy duty	43 heavy duty

## Additional property

Castor chair  ✓Antistatic behavior  ✓Underfloor heating  ✓Chemical resistance  ✓

The above information is for reference only. Armstrong is entitled to modify the above details at any time. The company reserves all legal rights and final interpretation rights for all contents in this sample.



Scan QR code



Samples are for color selection only  
 Seal sample shall be subject to the actual bulk sample